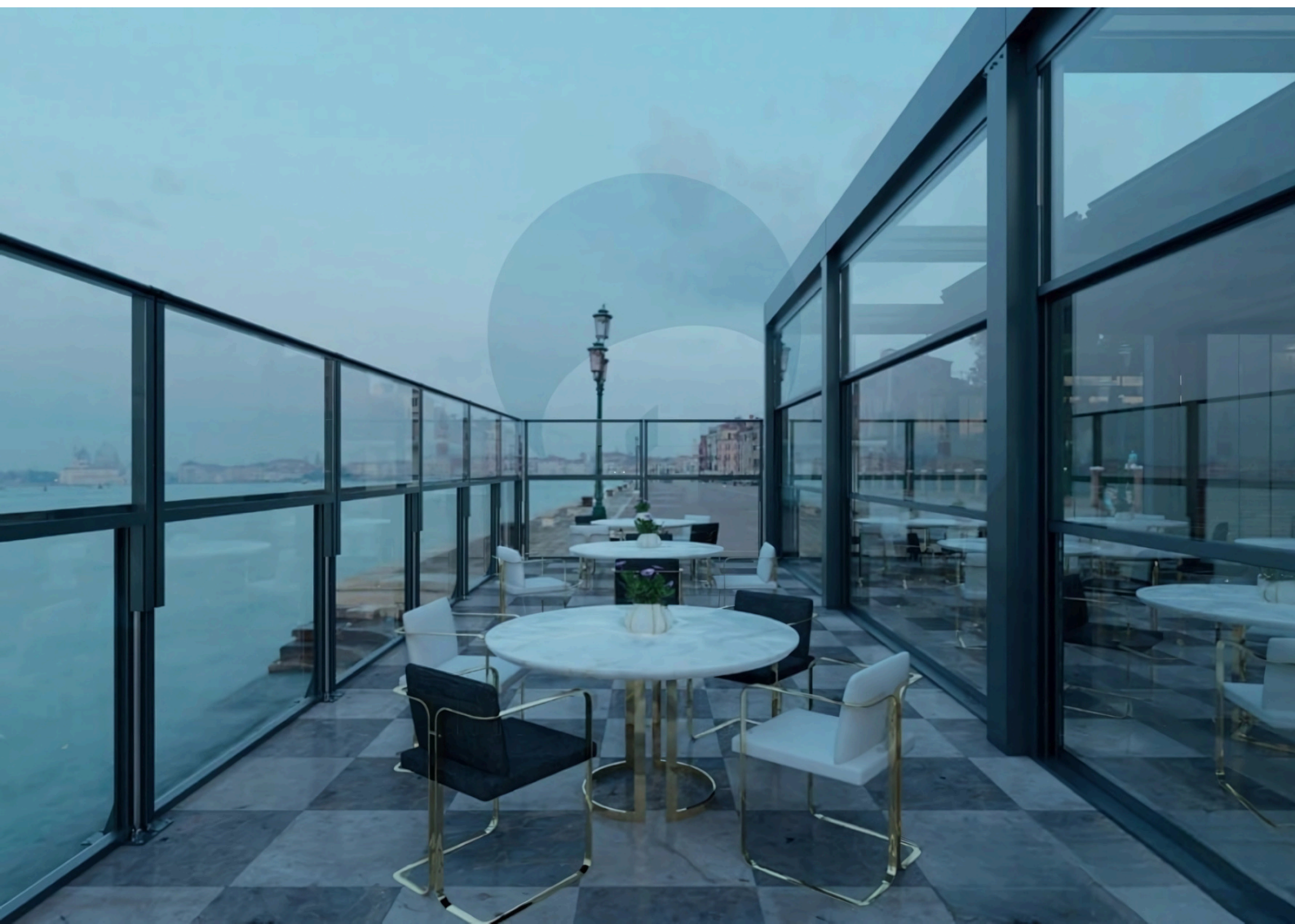


sunExt

**WIND
BREAK
GUILLOTINE**

ENG

CATALOG





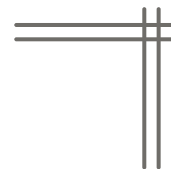
Protective

Transparent



Versatile

Index



Introduction	01
Cross Section	02
Technical Data	03
Extrusion Profiles	04
Accessories	05
Range of colors available for structure	06

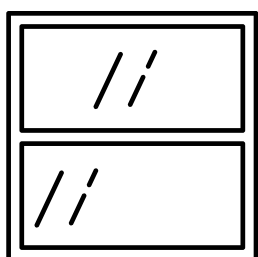


sunExt



Introduction

EXPALUM Wind Break system is designed to provide effective wind protection using high-quality aluminum profiles and durable glazing components.



Protection and Clarity, The vertical guillotine-style system shields outdoor areas from wind without obstructing views, maintaining a clear and open feel. Its transparent design allows full visibility while creating a comfortable and sheltered environment.

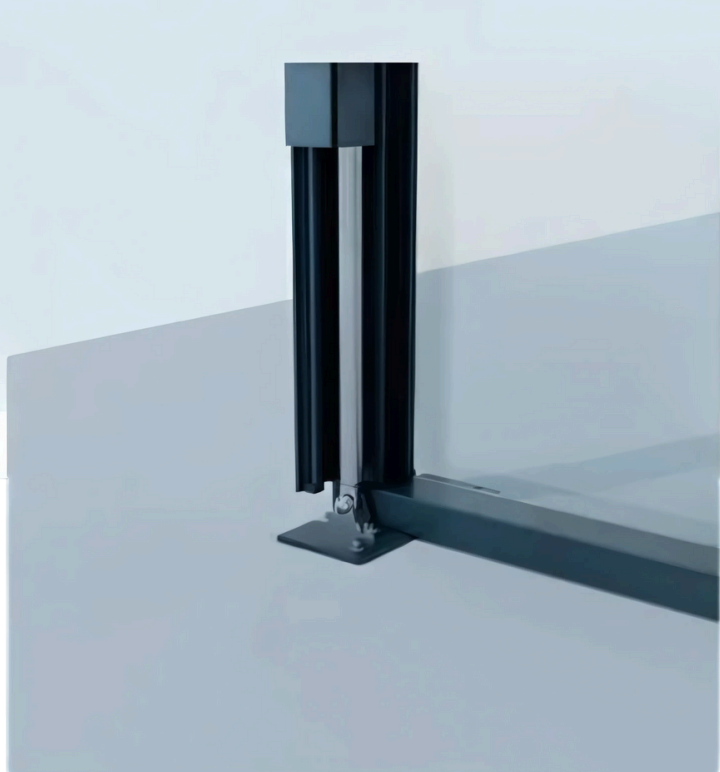
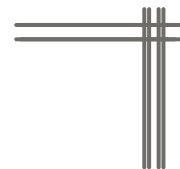
Weather Resistance and Comfort, Engineered for year-round use, the Wind Break is highly resistant to rain, wind, and other harsh conditions. It helps regulate the outdoor climate, enhancing comfort in patios, terraces, or commercial spaces like restaurants and cafés.



Adaptability and Style, With customizable dimensions and color options according to the RAL standard, the system blends seamlessly into any architectural style. Its sleek, modern appearance enhances the aesthetic value of outdoor areas while adding a functional layer of protection.

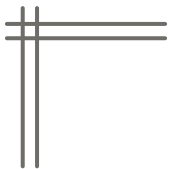


Cross Section



sunExt





Technical Data



Max 1800
mm



Airtight



Luminosity

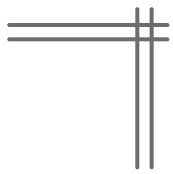


**High Wind
resistance**



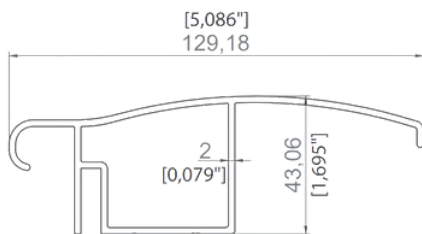
sunExt



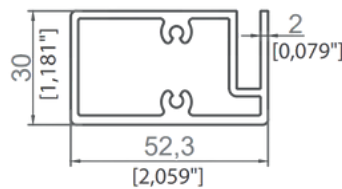


Extrusion Profiles

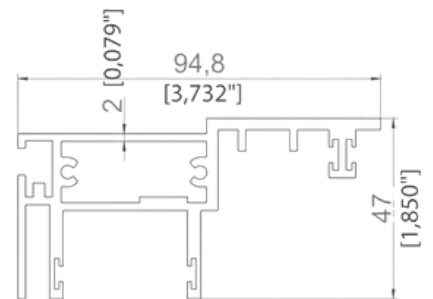
PG -



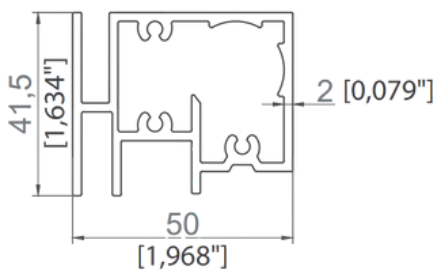
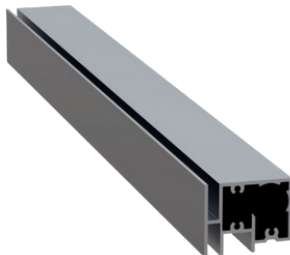
PG -



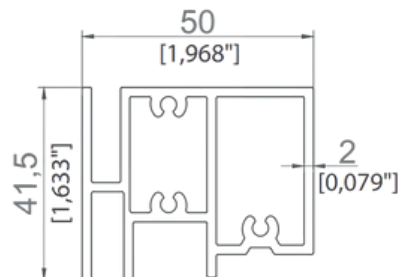
PG -



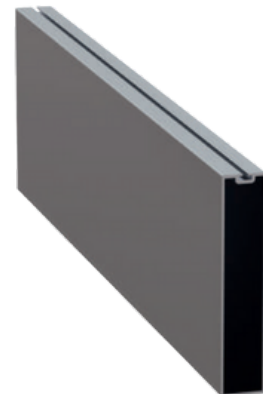
PG -



PG -

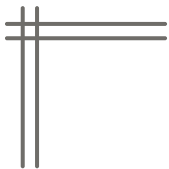


PG -



sunExt





Accessories

PG -



PG -



PG -



PG -



PG -



PG -



PG -



PG -



PG -



PG -



PG -



PG -

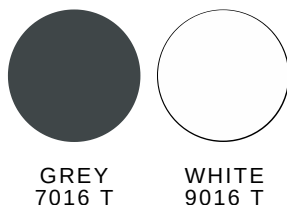


sunExt

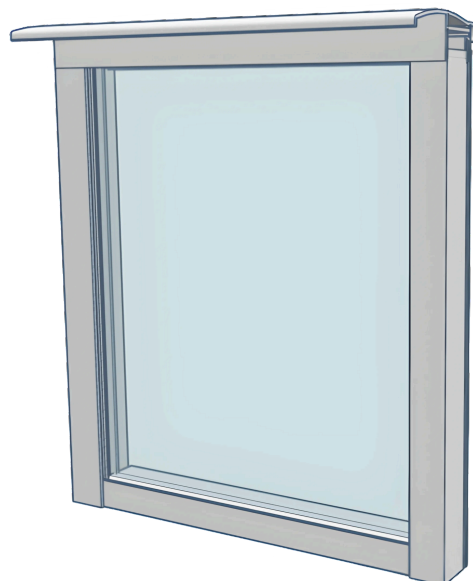


Range of colors available for structure

The main colors for selection are:



Other RAL colors available upon consultation.
Examples of Guillotine compositions:



sunExt

